

## Supplement to Operating Instructions 4-cycle motor drive for IMMOOS self-driven carriage type SS1



Conforms to the current valid regulation (EU) 2016/424 „on ropeways“ and is certified as a safety component.

## Inhaltsverzeichnis

1.	Important information .....	3
2.	Technical specifications.....	4
3.	Presentation of the supplemental equipment.....	5
4.	Application and description.....	5
5.	Preparation for travel with the 4-cycle motor drive .....	6
8.	Function of the 4-cycle motor drive.....	7
9.	Storage.....	7
10.	Inspection, cleaning, maintenance and repair .....	7
11.	Exclusion of liability.....	8
12.	Documentation of the annual expert inspection .....	9

## 1. Important information

The 4-cycle-motor drive is an accessory to the IMMOOS Type SS1 rescue carriage. The operating instructions GA\_DE\_Seilfahrgesetz\_Typ\_SS1 (Type SS1 rescue carriage) constitute an integral component of these operating instructions. Read these two operating instructions through carefully and keep all product instructions and information.

Activities at a high elevation are dangerous and can result in severe and even fatal injuries. Learning how to use the rescue carriage and appropriate safety measures is solely your responsibility.

The type SS1 IMMOOS rescue carriage (with or without motor drive) may only be used by instructed and professionally trained personnel.

The operating instructions of the various products used in conjunction with the IMMOOS type SS1 rescue carriage (with or without motor drive) must be complied with.

No changes may be made to the parts.

In the event of a serious fall or if the IMMOOS type SS1 rescue carriage itself falls down or a heavy object falls onto it, it may no longer be used. A deformation can impair the function of the sliding vehicle or internal non-visible fractures can reduce its strength.

The rescue carriage may only be used for the purpose intended. Other applications, such as the transportation of materials, are not allowed.

## 2. Technical specifications

The 4-cycle motor drive for the IMMOOS self-driven carriage type SS1 has been certified in accordance with the regulation 2016/424.

### Model IMMOOS self-driven carriage type SS1 with 4-cycle motor drive:

Nominal diameter of hoisting cable:  
12 - 60 mm

Maximum cable inclination uphill:  
36% (~20°) access for 1 rescuer  
17% (~10°) pulling 1 passenger  
8% (~5°) pulling 2 passengers

Maximum cable inclination downhill:  
105% (~46°) access for 1 rescuer  
36% (~20°) pulling 1 passenger  
23% (~13°) pulling 2 passengers

Maximum speed uphill:  
approx. 1 m/sec

Maximum speed downhill:  
approx. 1.8 m/sec

Maximum load:  
v = 0: 2.5 kN  
v ≠ 0: 1.25 kN

Weight:  
SS1 mGB approx. 7 kg + motor approx. 7 kg

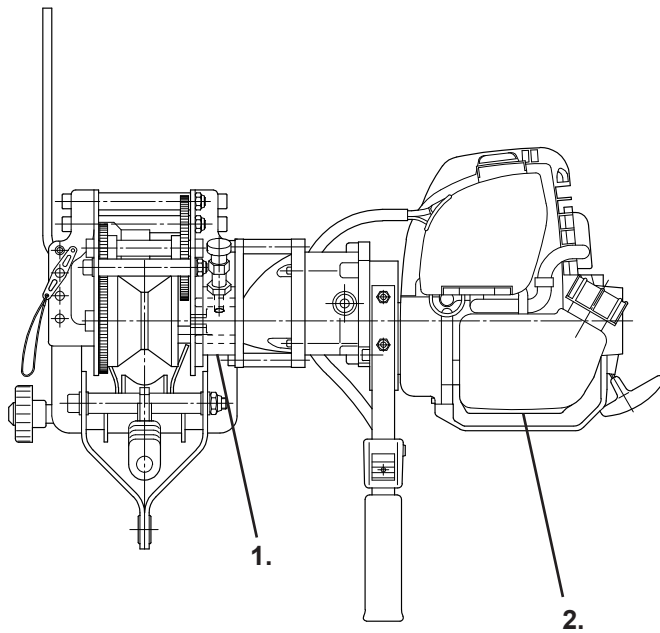
#### Travel experiments:

Different test drives were carried out with the self-driven carriage and the 4-cycle-motor drive on various ropeways.

The advantage of this lies in the fact that this self-driven carriage can be driven independently to the blocked cable car vehicle without a retaining rope and without the aid of an additional rescuer or helper. Thanks to the motor drive, the rescuer can also move himself or herself uphill independently.

The carriage can be used with all cable systems to move the „rescuer on the cable“ or to move passengers (cable diameter 12 - 60 mm).

### 3. Presentation of the supplemental equipment



1. Coupling plate for the IMMOOS self-driven carriage type SS1
2. 4-cycle-motor drive with forward and reverse gear



*The user also needs a corresponding PPE.*

### 4. Application and description

The IMMOOS self-driven carriage type SS1 with 4-cycle motor is an expansion of the conventional IMMOOS self-driven carriage type SS1, with which one can also travel upward with the same device. It is mainly used for rescuing persons on ropeways.

All that is needed for this is a flange on the existing device, where the motor can be attached.

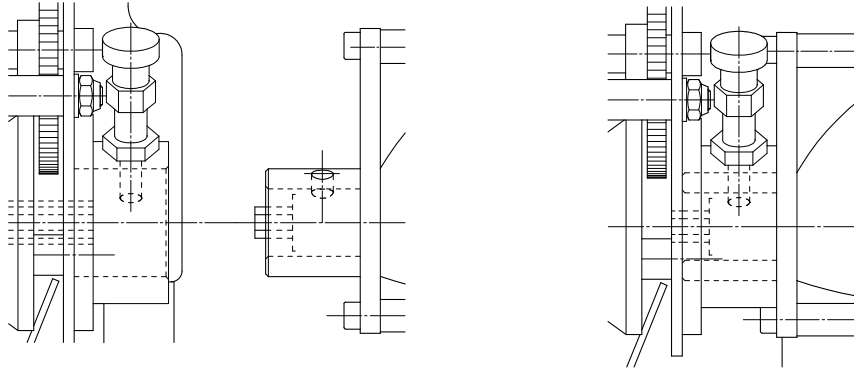
The motor itself has a forward and reverse gear, which permits travel on both sides with a rope span slope of up to 20°.

With the motorized carriage type SS1, with the help of an additional running gear, pulling of up to two passengers is also possible.

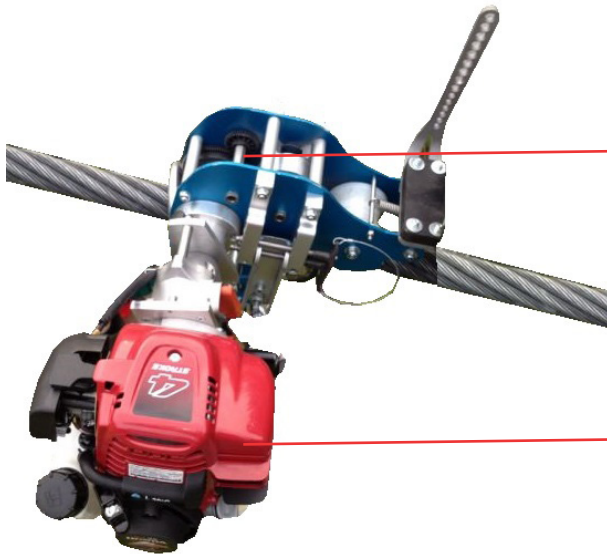
Securing with an additional retaining rope is not necessary.

## 5. Preparation for travel with the 4-cycle motor drive

- Pull out locking pin on the flange
- Insert the 4-cycle-motor drive into the free opening of the roller axle in the SS1
- Push in locking pin until it stops



*It must be ensured that the locking pin is correctly locked and so the motor cannot fall out.*



IMMOOS self-driven carriage type SS1

4-cycle Honda motor with forward and reverse gears

- The motor can be removed by loosening the locking pin and pulling the motor away.



*The hook of the safety line must be attached at a suitable place for every action.*



*During travel, the counterpressure roller must turn on the cable.*

## 8. Function of the 4-cycle motor drive

Please observe the accompanying **operating instructions GX25-GX35 from HONDA**. This constitutes an integral component of these operating instructions.

## 9. Storage

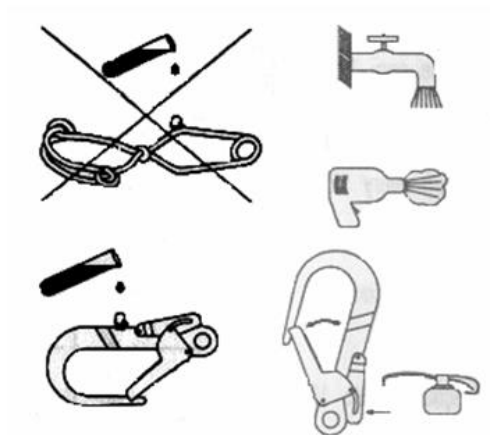
Store the self-driven carriage type SS1 with the 4-cycle motor drive in a dry area without extreme temperature fluctuations.



*Avoid contact with acids, corrosive liquids and oils.*

*After use or if dirty, the IMMOOS carriage type SS1 and the 4-cycle motor drive must be cleaned, if necessary.*

Always dry naturally, i. e., never near fire or other sources of heat.



Please observe the accompanying **operating instructions GX25-GX35 from HONDA**. This constitutes an integral component of these operating instructions.

## 10. Inspection, cleaning, maintenance and repair

As is well known, emergency ropeway rescues are rare. As a result, the IMMOOS self-driven carriage type SS1 and the 4-cycle motor drive are used very little (except for the exercises required by law).

The following frequencies for inspection, cleaning, maintenance and repair must therefore be complied with:

- |                         |  |
|-------------------------|--|
| - before every use      | visual inspection (check) by use   |
| - at least 1 x per year | inspection (check) by experts (exceptions for Austria: in accordance with the regulation for work devices) |



*Damaged or incomplete carriages must not be used.*

*In case of doubt, the rescue carriage must not be used.*

### **Annual inspection (check)**

Inspections (checks) by an expert must be conducted and documented at least 1 x per year.

In cases of doubt, the manufacturer or a person the manufacturer authorises must carry out inspection and maintenance.

Please observe the accompanying **operating instructions GX25-GX35 from HONDA**. This constitutes an integral component of these operating instructions.

## **11. Exclusion of liability**

IMMOOS GmbH declines any liability or obligation to pay damages if accidents or damage are attributable to:

- noncompliance with legal and official regulations
- noncompliance with rules or contractually agreed conditions of IMMOOS GmbH
- non-intended use of the IMMOOS type SS1 rescue carriage and the 4-cycle motor drive
- unauthorized changes to parts of the device
- replacement of parts with other materials
- extra stress on parts
- parts not designed, manufactured and supplied by IMMOOS GmbH
- sabotage, acts of war and cases of force majeure

Please observe the accompanying **operating instructions GX25-GX35 from HONDA**. This constitutes an integral component of these operating instructions.





# Notes

## Head office

Immoos GmbH  
Tramweg 35  
6414 Oberarth  
Schweiz  
T +41 41 857 06 66

## Branch office

Österreich  
Immoos GmbH  
Kirchstrasse 32  
6923 Lauterach  
Österreich  
T +43 664 134 44 38

[info@immoos.com](mailto:info@immoos.com)  
[www.immoos.com](http://www.immoos.com)